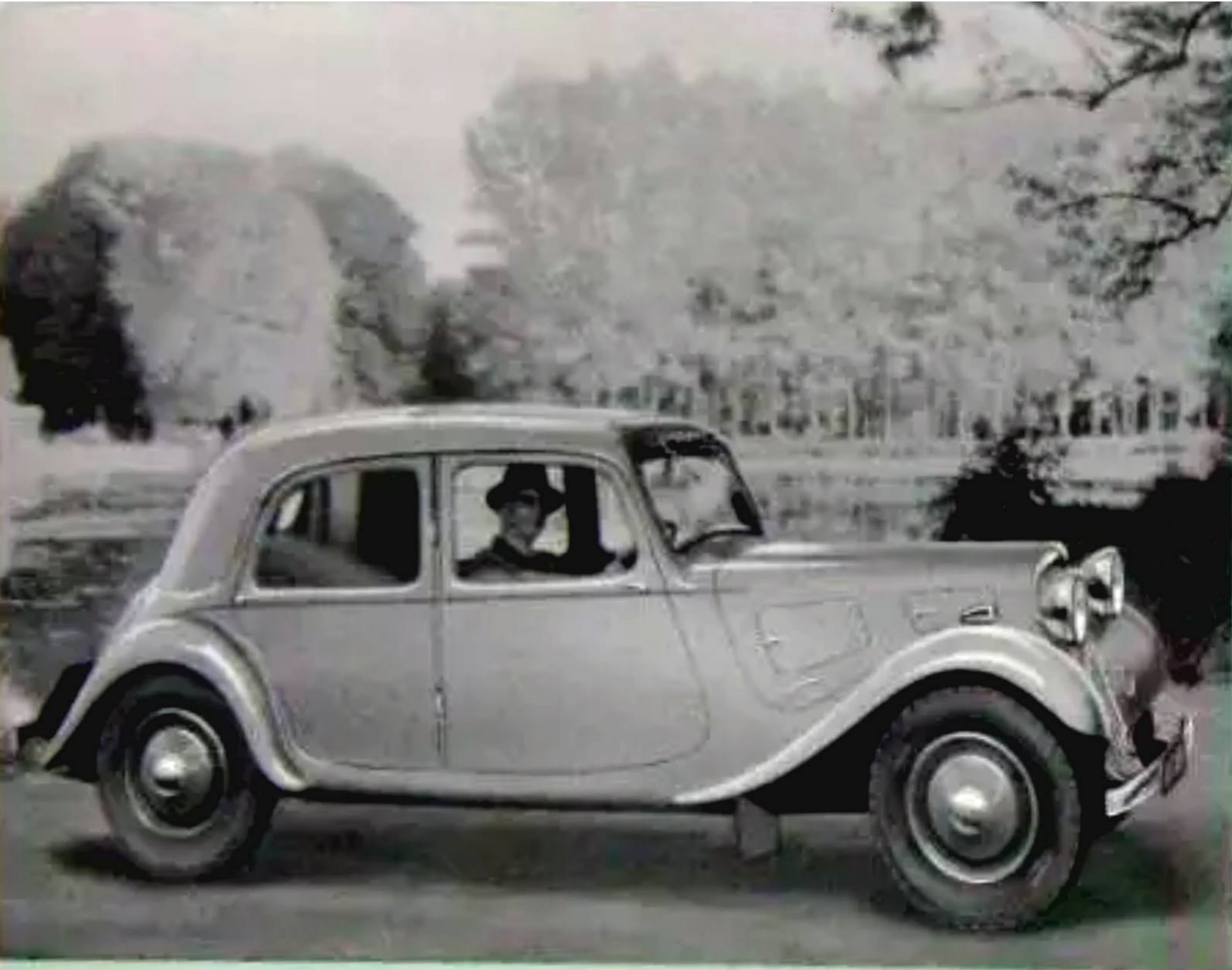


CITROËN



**"SPORTS  
TWELVE"**

Five-seater.

70 m.p.h.

**FRONT  
WHEEL  
DRIVE**

**"FIFTEEN"**

Five/six-seater

65 m.p.h.



**FRONT  
WHEEL  
DRIVE**

# THE ROADSTERS

"TWELVE"  
and  
"SPORTS  
TWELVE"  
ROADSTER

With Double Dickey.



FRONT  
WHEEL  
DRIVE



ROADSTER, showing hood up. A perfect all-weather car.



ROADSTER, with hood and screen folded. The hood is concealed when down.



Shapely lines, wide front seat, double dicky.



**CITROËN CARS LTD.**

**Head Office and Works :  
SLOUGH, BUCKS.**

**Telegrams : Citroworks, Slough.  
Telephone : Slough 1600**